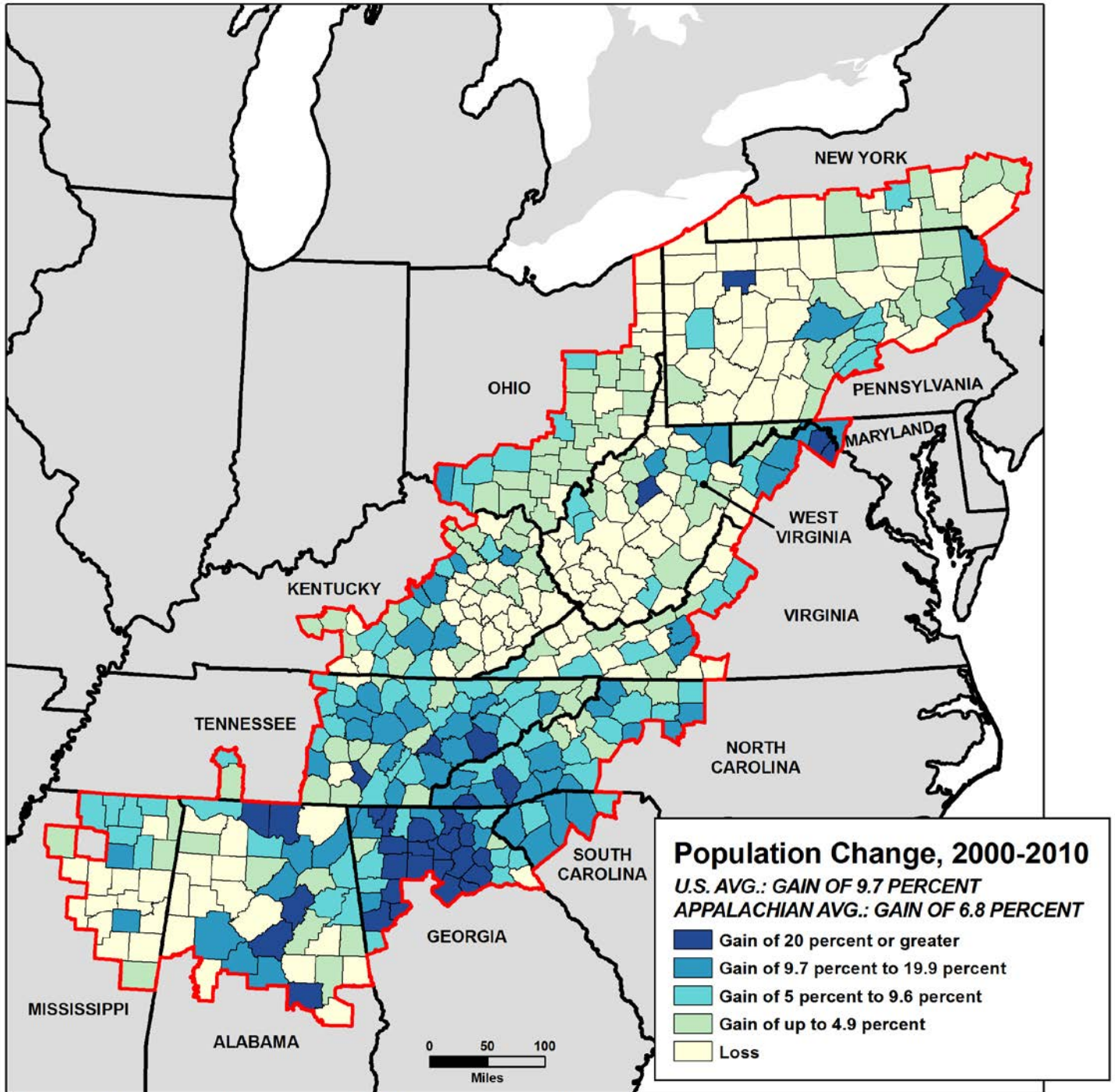


Figure 1.2: Population Change in the Appalachian Region, 2000-2010



Map Title: Population Change in the Appalachian Region, 2000-2010
 Data Sources: U.S. Census Bureau, 2000 and 2010 Decennial Censuses.

Appalachia’s 2010 population of 25.2 million was nearly 7 percent higher than it was in 2000, slightly lower than the nearly 10 percent growth rate for the United States as a whole. And in every Appalachian state except Alabama and Georgia, the part of the state outside the Appalachian region grew at a faster rate.

Yet population change varied greatly within the region. On the one hand, one-third of the region’s 420 counties lost population during the decade—mostly in the northern and central counties, as well as in parts of Alabama and Mississippi. However, nearly one in four Appalachian counties grew at or above the national average. Most of the fastest-growing counties were in Southern and South Central Appalachia, although some counties in Kentucky, Pennsylvania, and West Virginia also experienced rapid growth.